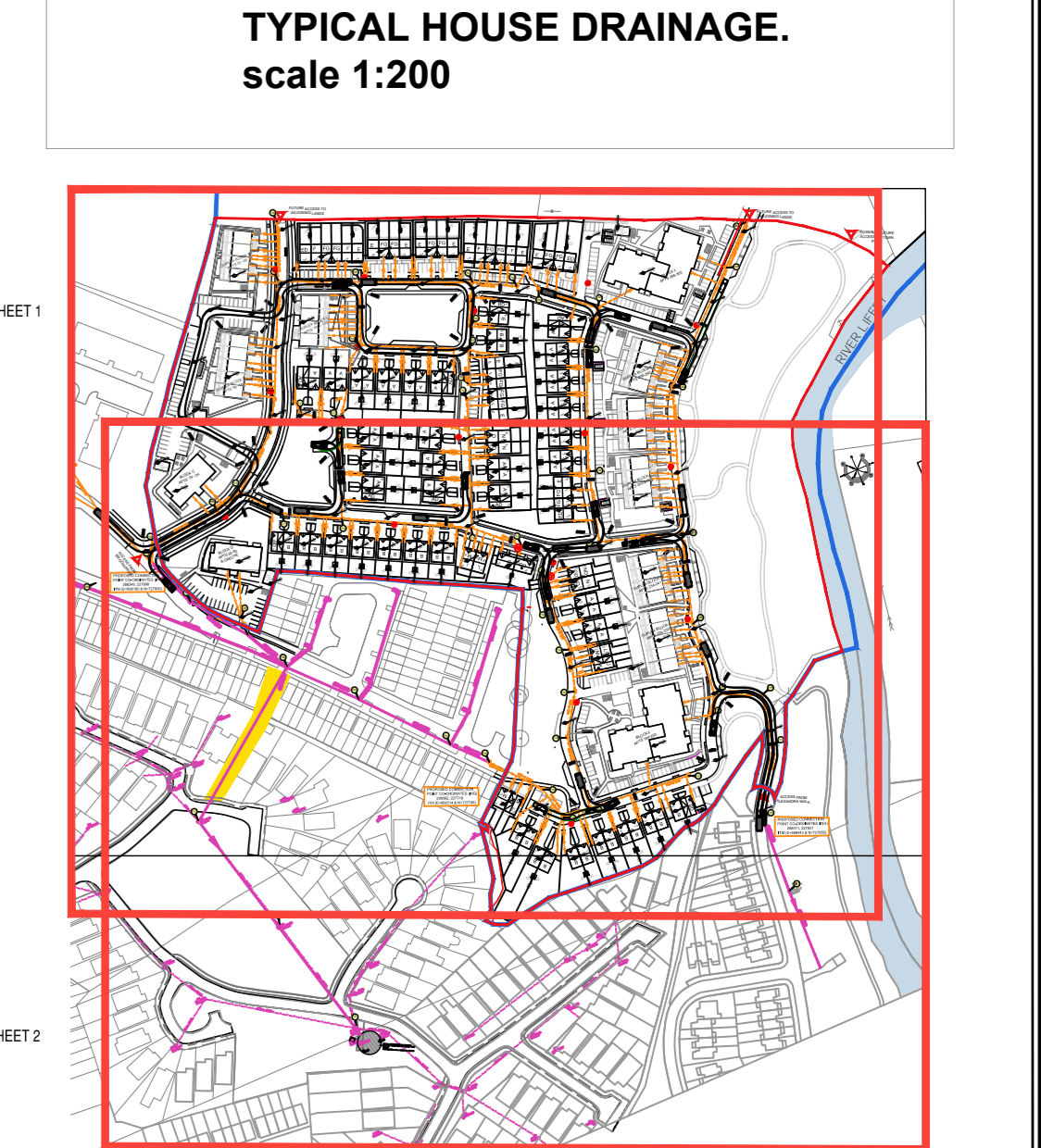
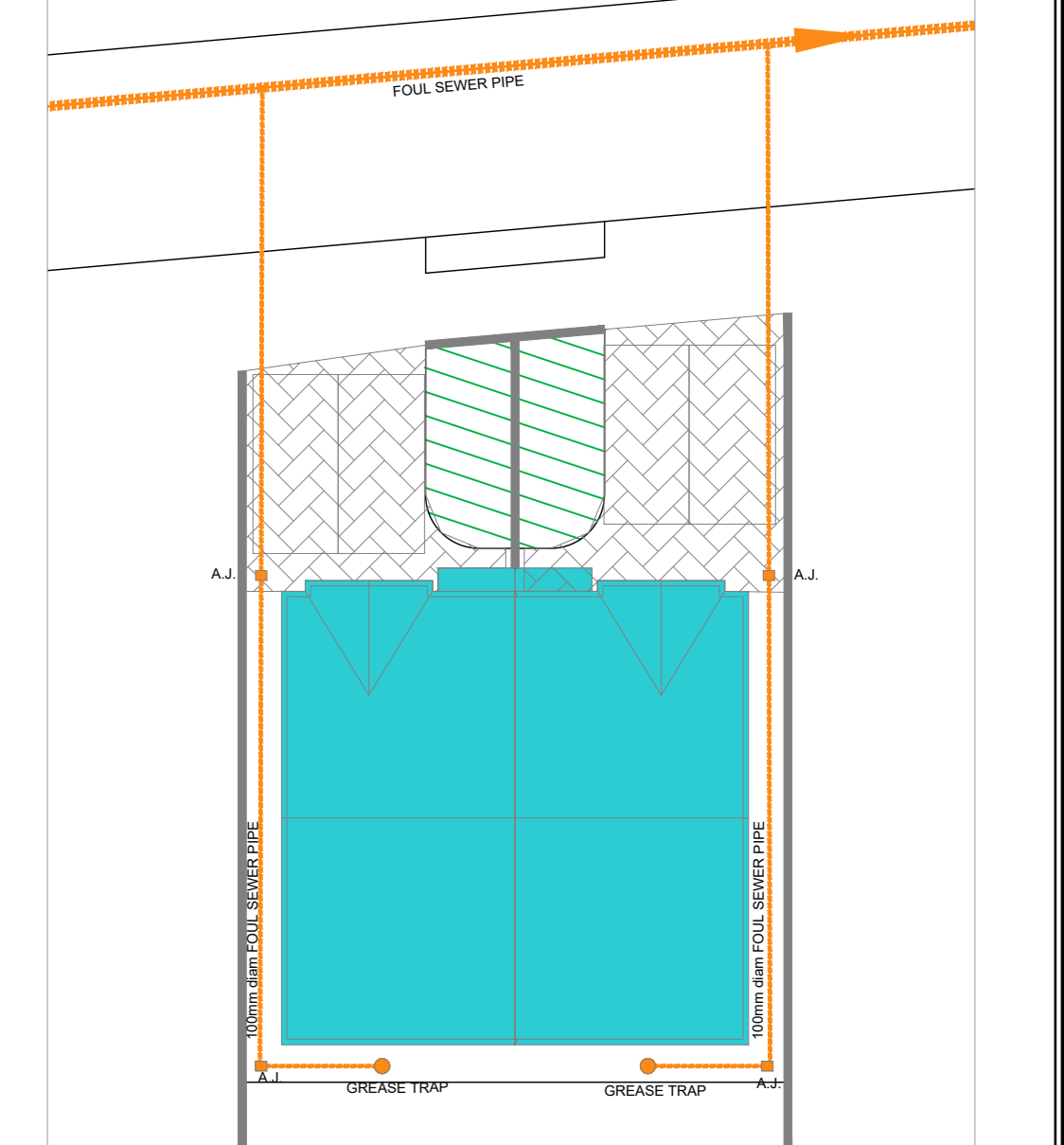
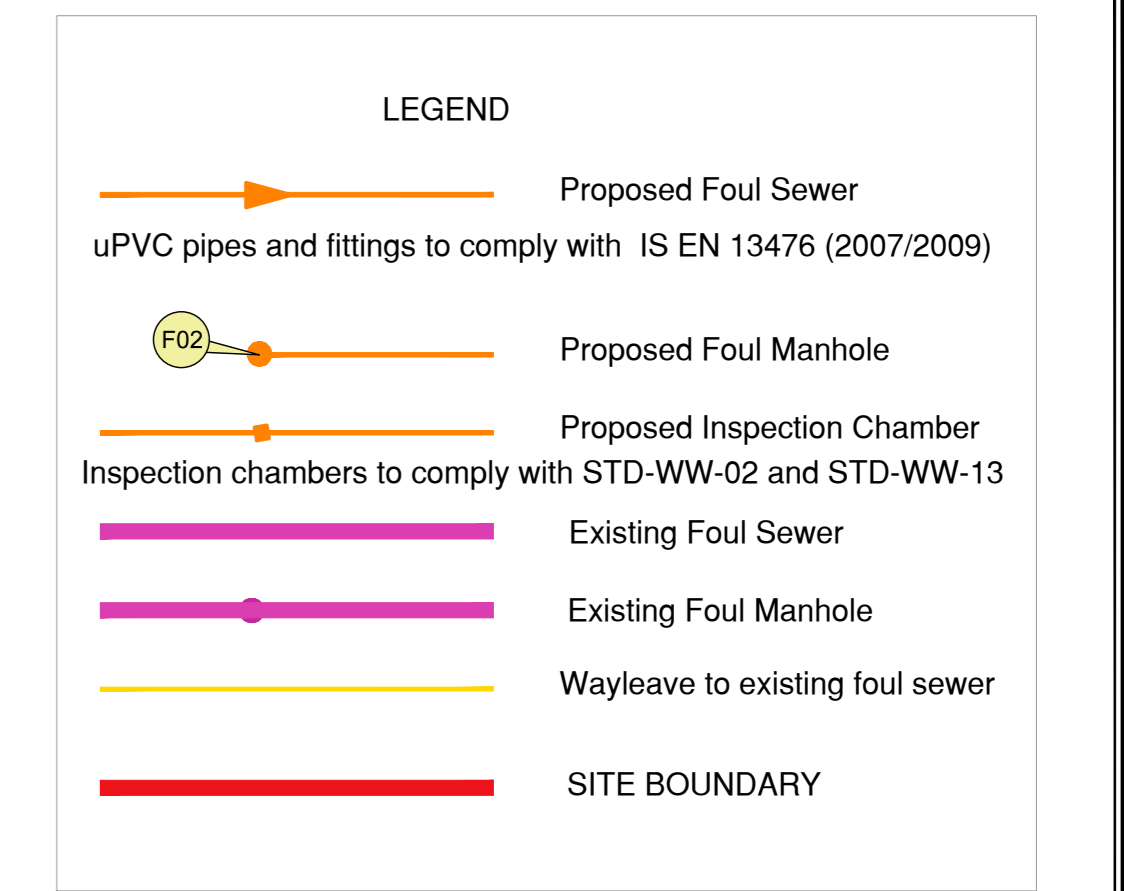


NOTES:
 ALL WORKS TO COMPLY WITH IRISH WATER CONNECTION AND DEVELOPER SERVICES WASTEWATER INFRASTRUCTURE STANDARD DETAILS.

- ALL HOUSE CONNECTIONS IN ACCORDANCE WITH DRG. NO. STD-WW-03
- SEPERATION DISTANCES IN ACCORDANCE WITH DRG. NO. STD-WW-05
- TRENCH BACKFILLING IN ACCORDANCE WITH DRG. NO. STD-WW-07
- MANHOLES CONSTRUCTED IN ACCORDANCE WITH DRG. NO. STD-WW-09 OR 10
- BACKDROP MANHOLES IN ACCORDANCE WITH DRG. NO. STD-WW-12
- ALL PIPES TO BE uPVC PIPES AND FITTINGS AND COMPLY WITH THE PROVISIONS OF IS EN 1401 2009/2012. PIPES TO BE APPLICATION AREA CODE "UD", STIFFNESS CLASS 8kN/m². PROVISION FR JETTING SHALL BE BASED ON THE WRc SEWER JETTING CODE OF PRACTICE, JUNE 1997. PIPES TO BE CAPABLE OF RESISTING A MAXIMUM JETTING PUMP PRESSURE 2.600psi (180 BAR) WITHOUT DAMAGE.
- PUSH IN RUBBER RING JOINTS SHALL BE PLACED IN ACCORDANCE WITH MANUFACTURER'S INSTRUCTIONS FOR THE PIPE MATERIAL.

FOUL MANHOLE SCHEDULE

MAN No.	Cover Level	Invert Level
F 101	66.40	65.07
F 102	66.40	65.07
F 103	66.15	64.65
F 104	66.70	65.75
F 105	66.45	65.42
F 106	66.25	64.39
F 107	65.45	64.08
F 108	65.50	64.13
F 109	65.45	63.63
F 109a	66.10	63.24
F 110	66.10	63.15
F 111	66.05	64.56
F 112	66.35	64.19
F 113	66.65	65.28
F 114	67.25	64.53
F 115	66.75	64.03
F 116	66.95	63.27
F 117	66.25	62.99
F 118	65.95	62.89
F 119	65.85	62.64
F 122	65.66	62.45
F 124	67.35	65.82
F 125	67.10	65.48
F 126	66.60	65.16
F 127	66.60	64.70
F 128	66.65	64.26
F 129	66.00	64.56
F 130	66.35	63.76
F 131	66.15	63.20
F 132	66.25	63.13
F 30	65.90	63.00
F 201	66.40	65.50
F 202	66.60	64.91
F 203	66.40	64.66
F 204	66.90	64.08
F 205	67.20	63.74
F 206	67.25	64.80
F 207	66.95	64.66
F 208	66.80	64.03
F 209	67.25	63.35
F 210	66.45	63.84
F 211	65.85	63.03
F 212	66.15	62.81
F 213	65.70	62.68
F 214	66.00	62.52
F 215	66.15	62.52
F EXIST A	66.39	62.08
F PLUMP	66.53	61.72
F 22	65.66	64.23
F 23	65.54	62.31
F 24	65.70	62.17
F 36	65.80	62.04
F 30	65.90	63.00
F 31	65.80	62.76
F 33	66.06	62.31
F 36	66.33	62.86
F 10	65.60	61.69
F 11	66.33	61.42
F 21	65.92	61.15



See dwg 1800-303-16 for typical details

Client: Westar Investments Ltd.
 Job: Clane KDA1 SHD
 Location: Lends at Captoo & Abbeylands, Clane, Co. Kildare
 Drawing Title: SITE LAYOUT - SERVICES
 Foul Sewer - Sheet 02 of 02

bca brian connolly associates
 CONSULTING ENGINEERS
 BSc Eng. MSc. DIC. C.Eng. MEEI
 The Studio, "West's Way", Clane, Co. Kildare. T: 045 852111 F: 045 852102
 e: bcassoc@eircom.net

Planning - SHD 02b

job no: 18002
 date: 02.11.18
 scale: 1:500 @ AD
 drawn by: Brian Connolly
 cad ref no:
 300
 planning ref no:
 fire ref no:
 drawing no: 303-1 Sheet 2